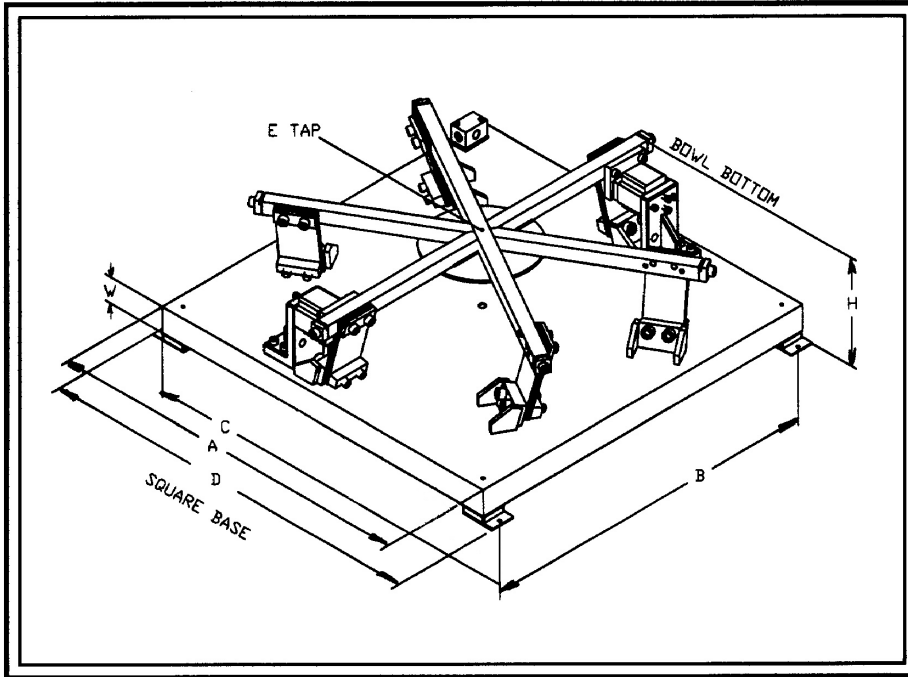




**RODIX, Inc.**

**RODIX, INC.**  
 2303 23rd Ave.  
 Rockford, IL 61104  
 Phone: (815) 316-4700  
 (800) 562-1868  
 Fax: (815) 316-4701

RODIX Web Site: [www.rodix.com](http://www.rodix.com) E-Mail: [custserve@rodix.com](mailto:custserve@rodix.com)



**DRIVE BASE BASIC DIMENSIONS**

BASE <A>	30
MTG. <B>	27.25
MTG. <C>	31.50
MTG. <D>	32.50
HEIGHT <H>	11.0
TAP <E>	3/8-16
BASE <W>	2"
AVG/MAX BWL. & PP WT	167/250#
APPX. WT.	740#

**30" CW BOWL DRIVE BASE  
 (6) POSTS - (2) COILS**

**SPARE PARTS:**

**COIL OPTIONS:**

120 VAC: P/N 6-42-81  
 240 VAC: P/N 6-42-89

**SPRING OPTIONS:**

1/8" THK P/N 90-3-07  
 3/16" THK P/N 90-3-06  
 1/4" THK P/N 90-3-105  
 5/16" THK P/N 90-3-135  
 3/8" THK P/N 90-3-120

**SPACERS:**

UPPER SPACER: P/N 88-3-61  
 LOWER SPACER: P/N 88-3-65

MOUNTING FEET: P/N 96-1-12

**TOE CLAMP OPTIONS:**

Standard: P/N 53-1-16  
 Deep Step: P/N 53-1-15

**PART NUMBERS:**

**STANDARD CONFIGURATION:**

120 VAC: P/N 26-202-09  
 240 VAC: P/N 26-202-39

**DOUBLE TOE CLAMP:**

120 VAC: P/N 26-202-166  
 240 VAC: P/N 26-202-168